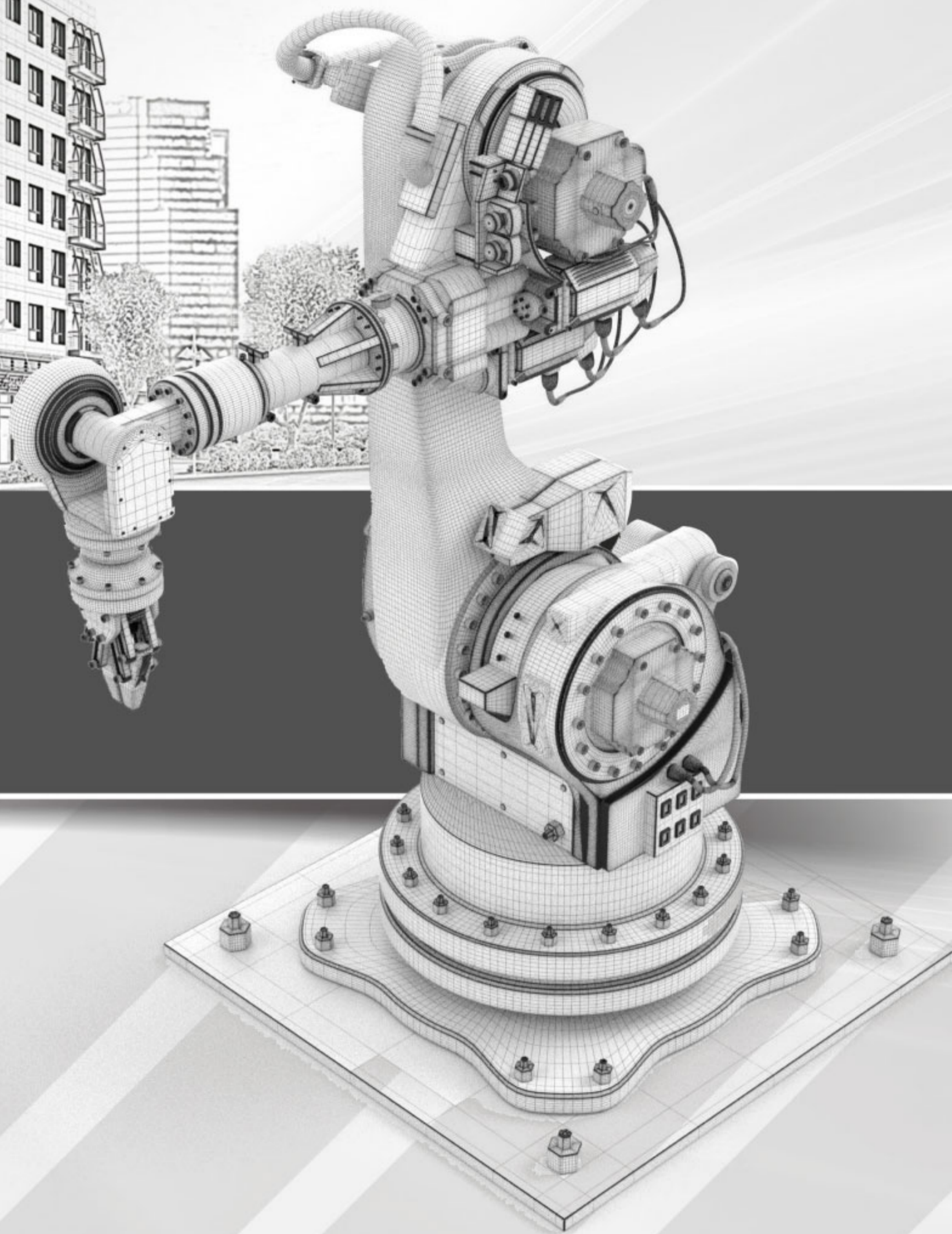




**ROBOTIC
VOLUMETRIC
MODULAR
CONSTRUCTION**



01

ROBOTIC VOLUMETRIC MODULAR CONSTRUCTION

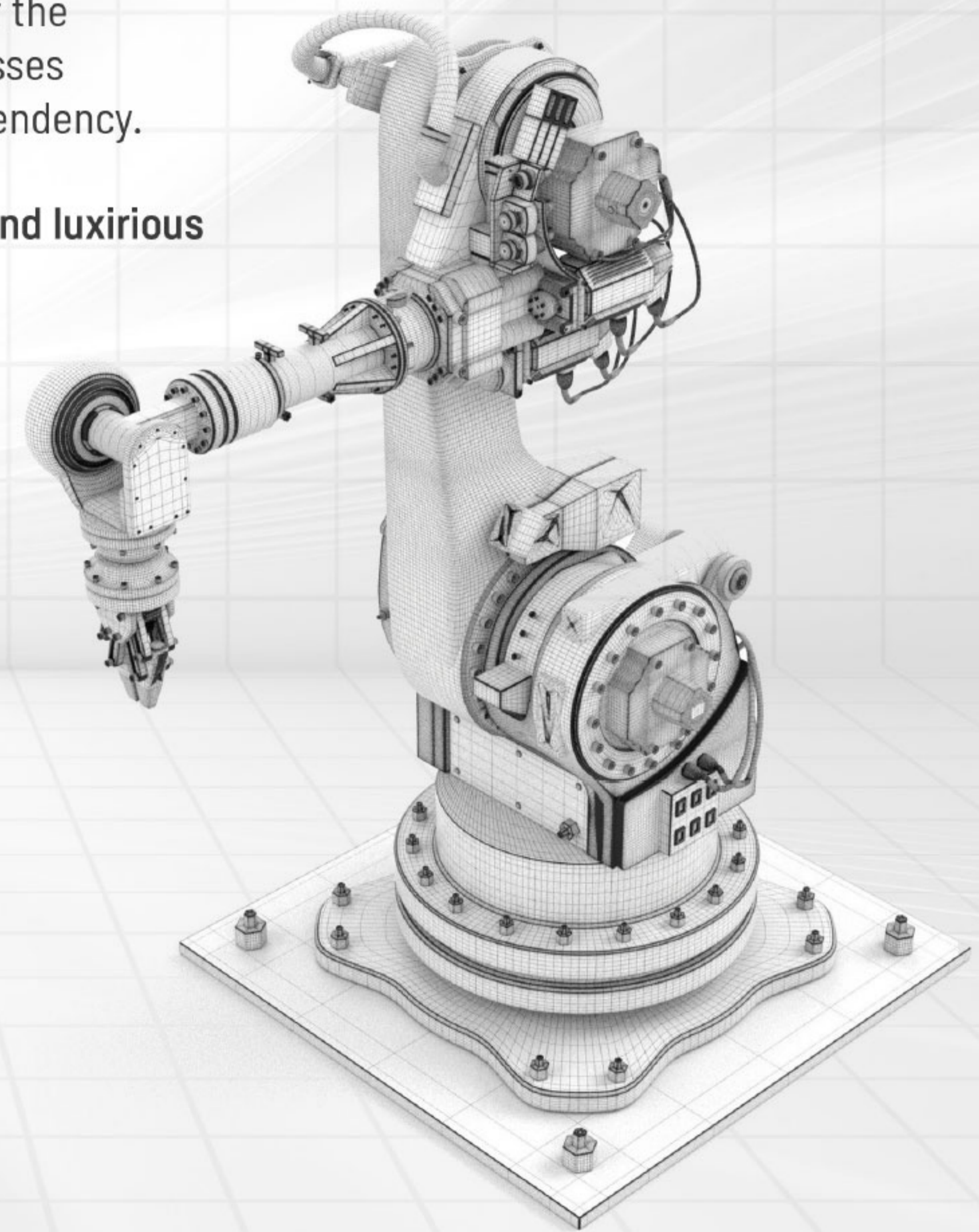
EUROMOD TECHNOLOGY



The starting point of **EUROMOD** is to present better construction quality of relatively lower prices. Therefore, **EUROMOD** eliminates most of the related negative effects of the conventional technics, mainly the high and unpredictable construction cost, time losses caused by construction site conditions and use of manpower and geographical dependency.

With **EUROMOD**, all these problems are minimized and the production of **affordable and luxurious superstructures with lower prices will be supplied**. Transforming the construction is the only way to supply the hundreds millions of housing deficit in the globe.

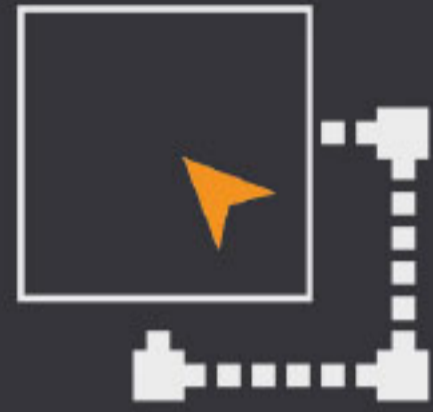
EUROMOD, Off-Site Volumetric Modular Construction brings the construction to the factory environment and meets the principles of Industry 4.0 **Robotic Volumetric Modular Construction** system where shall be made 95% of the construction within the factory and only 5% of the construction is on site.



02

ROBOTIC VOLUMETRIC MODULAR CONSTRUCTION

EUROMOD PRODUCTION PHASE



According to project needs, design and projects are prepared and drawn in 3D with the finest details. This design is composed of the divided construction parts.



At the production stage, robots and special designed panels and bands are used for the operation. Production is achieved using minimum manpower.



All volumes are produced as designed and fully completed such as including facade cladding and interior materials (bathroom cabinets, kitchen utensils, armatures, etc.). Ready-to-use construction modules are packed at the factory, and transferred to the site by truck, vessel or aircraft.



The products that are transferred to the site area are added to each other and quickly assembled from the outside. No one enters into the modules coming out of the factory before the end user.



**EXPERIENCE**

- Experienced in **more than 18 different countries.**
- Have more than **20 years of experience.**
- Involved in **large scale of transactions.**
- Pioneer of the light steel / modular construction** in Turkey.
- Completed more than **2.000.000 sqm construction in different forms of modular construction.**

We have a **team of experts** dedicated to each topic;

**TEAM**

- Construction Engineers** who knows the best practices of construction.
- Industrial Engineers** that defines the optimum ways for converting construction into an industry.
- Designers** who draw the factory area and illustrate all robotic work panels and machinery details.
- Architects** who design the product in its best use.

Academic Solution Partners



Design Solution Partners



Technical Solution Partners



SUPPLY

DESIGN

PRODUCTION

ASSEMBLY

SALE

Lower cost of material thanks to **continuous demand** of material as a **result of mass production.**
(Economics of Scale)

Creating its own supply chain management and **ecosystem.**

Better terms for the **payment** of the **materials** to be used in the production.

BIM technology in design.

More **earthquake and fire resistant and sustainable** product design.

With latest technology programs, **3D detailed solutions** in design.

Repeatable & adjustable designs.

Open to use any sort of **innovative materials** for the product.

Easy and faster **industrial design** solutions with the **feeling of the conventional product.**

Identical and higher quality of the product thanks to digitalization of the process.

Faster production % 70

Flexible product design in case of need **for upgrade.**

%95 of the process under **factory environment.**

Easy to comply with the timeline, 24/7 production

Low cost production by means of factory production.

Only **few workers** needed for the assembly.

Almost zero on-site problems and delays.

Modules are ready to use, **assembly is made from outside** of the modules

Takes short time, causes no discomfort for neighborhood

Independent from the **geographical constraints.**

Modules can **easy be used** by **contractors / developers.**

Construction units as a **factory production products.**

Flexible to **meet urgent needs** (easy to relocate, function changeable etc.)

Ease to **meet fast urgent and /or large scale demands.**

Big data for retail sales.

CONTAINER



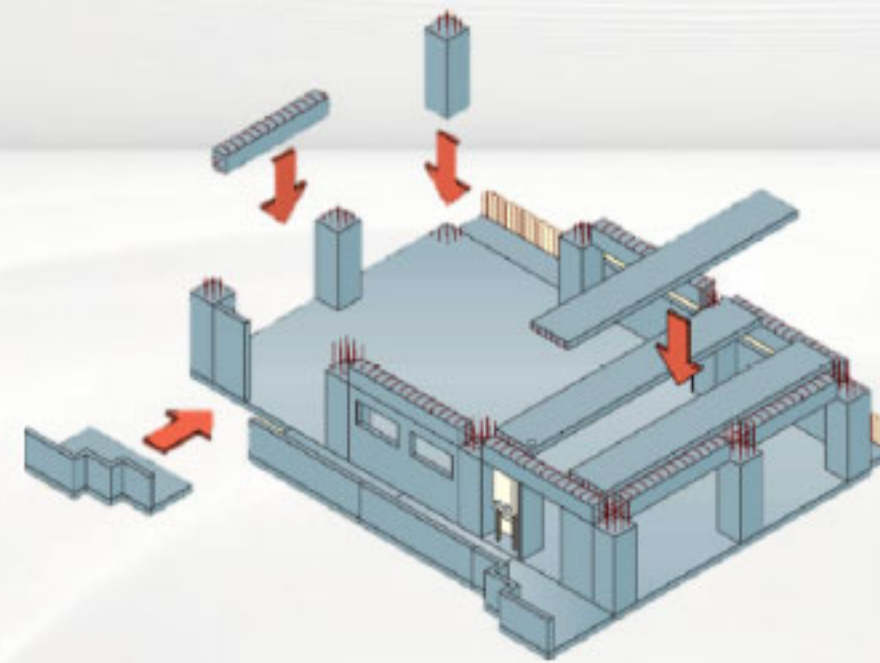
- Generally produced by companies who has **no construction or housing experience**.
- **Lower quality**.
- **Low earthquake and fire resistancy**.
- Suitable for **temporary usage** mostly in construction area or storage area.

PREFABRICATED CONSTRUCTION



- Generally produced by companies who has **no construction or housing experience**.
- **Lower quality**.
- **Low earthquake and fire resistancy**.
- **Sense of shelter** more than a house.
- Mostly for **temporary use**.

MODULAR / VOLUMETRIC MODULAR CONSTRUCTIONS



- **Lowers site problems**.
- Quality, speed and cost is **better than conventional construction**.
- Construction parts (columns, walls or maybe volumes) are **completed by manpower** in the off-site area and assembled by manpower on-site.
- In Volumetric Modular Construction, **modules are produced by manpower in off-site area and assembled by crane on site**.
- Can not **meet the mass demand**, it is **not automated**.

ROBOTIC VOLUMETRIC CONSTRUCTION



- **Production completed with robots** in factory conditions with **Industry 4.0** principles.
- **Highest quality** and **same sense with conventional** constructions.
- **Cheapest, fastest and best quality** product.
- Flexible to meet **mass and retail demand**.

**GOVERNMENT
PROJECTS****Schools****Hotels****Dormitories****Hospitals****Rehabilitation****Centers****Care Houses****Facilities****Affordable Houses****PPP Projects****MASS
PROJECTS****Mass Affordable****Houses****Social Houses****City Polyclinics****Mega Projects****RETAIL
SALES****Online Sales****Big Data Retail Sales****B to C Sales****Order Based Sales****MODULE
SALES****End- finished
product** to a developer
or constructor.**Assembly
& Transportation
& Factory**
can be
charged as different
saleable services.





EUROMOD

ANNEX

**ROBOTIC
VOLUMETRIC
MODULAR
CONSTRUCTION**











THANK YOU